

COURSE OVERVIEW PE0102
Certified Process Plant Operator Program

Course Title

Certified Process Plant Operator Program

Course Date/Venue

Session 1: September 29-October 03, 2024/
 Boardroom 1, Elite Byblos Hotel Al
 Barsha, Sheikh Zayed Road, Dubai,
 UAE

Session 2: November 10-14, 2024/Club B Meeting
 Room, Ramada Plaza by Wyndham
 Istanbul City Center, Istanbul, Turkey



Course Reference

PE0102

Course Duration/Credits

Five days/3.0 CEUs/30 PDHs



Course Description



This practical and highly-interactive course includes various practical sessions and exercises. Theory learnt will be applied using our state-of-the-art simulators.



The abnormal process situations cost the processing industry billions of dollars a year. 40% of this lost is directly attributable to human errors, with the failure to properly troubleshoot the condition being the leading contributor. The operations team is the first line of defense against process upsets and equipment problems. Failure to identify and resolve these situations quickly can lead to lost production, off-spec product, equipment loss, and even catastrophic accidents. Therefore, the ability to troubleshoot process operations is one of the most valuable skills operations personnel can possess. However, in order to troubleshoot the process or equipment, you have to understand the theory laying behind such process and equipment. This is what this course all about.



The course is designed to provide participants with the proper application, operation, maintenance and troubleshooting of the various types of process equipment such as compressors, pumps, motors, turbines, turbo-expanders, gears, heat exchangers, piping systems, distillation columns, reboilers, pressure vessels and valves.

The course will feature a unique blend of practical application experience and basic analysis methods. Its aim is to convey a thorough understanding of equipment operating principles and troubleshooting techniques.

The course covers the various process control and instrumentation methods such as pressure measurement, level measurement, temperature measurement, flow measurement, basic principles of control systems, P&ID, wiring schematics & diagrams, control valves and process considerations. It will equip participants with the basic tools and techniques for troubleshooting real-world problems. The use of the troubleshooting methodology defined in this course can greatly improve the ability of the operations team to troubleshoot effectively. With an improved understanding of troubleshooting principles, you will be better equipped to react to process upsets in order to prevent downtime and/or accidents.

The course includes a comprehensive e-book entitled “*Operator’s Guide to Rotating Equipment: An Introduction to Rotating Equipment Construction, Operating Principles, Troubleshooting and Best Practices*”, published by AuthorHouse, which will be given to the participants to help them appreciate the principles presented in the course.

Course Objectives

Upon the successful completion of this course, each participant will be able to: -

- Get certified as a “*Certified Process Plant Operator*”
- Apply a comprehensive knowledge and skills in process operations, process control and troubleshooting techniques
- Operate, maintain and troubleshoot process equipment such as centrifugal pumps, positive displacement & vacuum pumps, centrifugal compressors, displacement compressors, steam turbine & expanders, gas turbines & engines, fan & blowers, etc.
- Identify and differentiate various types of electric motors, gears & transmission equipment, heat exchangers, distillation columns, reboilers, condensers and explain how trays work
- Discuss the piping layout and components including the piping arrangements, specifications, fittings, etc.
- Distinguish the various measurement in process control such as pressure measurement, level measurement, temperature measurement and flow measurement and differentiate their corresponding principles
- Recognize the principles of control valves including its body types, cavitation, valve coefficient and characteristics and list the main types of actuators and accessories
- Apply systematic techniques in troubleshooting process operations and carryout successful troubleshooting activities
- Analyze the mental problem-solving process and demonstrate the use of the troubleshooter’s worksheet
- Practice the rules-of-thumb techniques for troubleshooting of process equipment

Exclusive Smart Training Kit - H-STK



Participants of this course will receive the exclusive “Haward Smart Training Kit” (H-STK®). The H-STK® consists of a comprehensive set of technical content which includes **electronic version** of the course materials, sample video clips of the instructor’s actual lectures & practical sessions during the course conveniently saved in a **Tablet PC**.

Who Should Attend

This course provides a wide understanding and deeper appreciation of process plant operations and control for technical and operational staff.

Training Methodology

All our Courses are including **Hands-on Practical Sessions** using equipment, State-of-the-Art Simulators, Drawings, Case Studies, Videos and Exercises. The courses include the following training methodologies as a percentage of the total tuition hours:-

- 30% Lectures
- 20% Practical Workshops & Work Presentations
- 30% Hands-on Practical Exercises & Case Studies
- 20% Simulators (Hardware & Software) & Videos

In an unlikely event, the course instructor may modify the above training methodology before or during the course for technical reasons.

Course Fee

Dubai	US\$ 5,500 per Delegate + VAT . This rate includes H-STK® (Haward Smart Training Kit), buffet lunch, coffee/tea on arrival, morning & afternoon of each day.
Istanbul	US\$ 6,000 per Delegate + VAT . This rate includes Participants Pack (Folder, Manual, Hand-outs, etc.), buffet lunch, coffee/tea on arrival, morning & afternoon of each day.

Accommodation

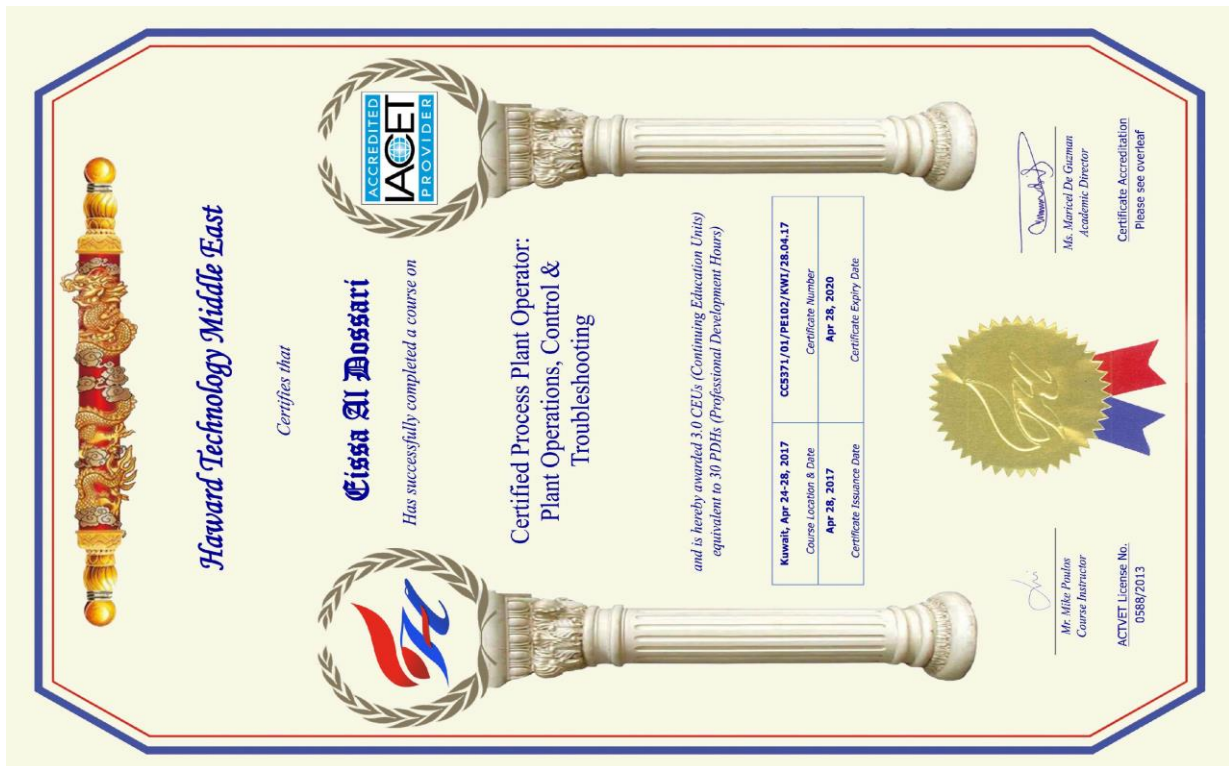
Accommodation is not included in the course fees. However, any accommodation required can be arranged at the time of booking.

Course Certificate(s)

(1) Internationally recognized Competency Certificates and Plastic Wallet Cards will be issued to participants who completed a minimum of 80% of the total tuition hours and successfully passed the exam at the end of the course. Successful candidate will be certified as a “Certified Process Plant Operator”. Certificates are valid for 5 years.

Sample of Certificates

The following are sample of the certificates that will be awarded to courses participants: -



- (2) Official Transcript of Records will be provided to the successful delegates with the equivalent number of ANSI/IACET accredited Continuing Education Units (CEUs) earned during the course.

* Haward Technology * CEUs * Haward Technology * CEUs * Haward Technology * CEUs * Haward Technology *



Page 1 of 1

CEUs

Haward Technology Middle East
Continuing Professional Development (HTME-CPD)

CEU Official Transcript of Records

TOR Issuance Date: 28-Apr-17
HTME No. PAR11317
Participant Name: Eissa Al Dossari

Program Ref.	Program Title	Program Date	No. of Contact Hours	CEU's
PE102	Certified Process Plant Operator: <i>Plant Operations, Control & Troubleshooting</i>	April 24-28, 2017	30	3.0
Total No. of CEU's Earned as of TOR Issuance Date				3.0

TRUE COPY


 Maricel De Guzman
 Academic Director

Haward Technology has been approved as an Authorized Provider by the International Association for Continuing Education and Training (IACET), 1760 Old Meadow Road, Suite 500, McLean, VA 22102, USA. In obtaining this approval, Haward Technology has demonstrated that it complies with the ANSI/IACET 1-2013 Standard which is widely recognized as the standard of good practice internationally. As a result of their Authorized Provider membership status, Haward Technology is authorized to offer IACET CEUs for programs that qualify under the ANSI/IACET 1-2013 Standard.

Haward Technology's courses meet the professional certification and continuing education requirements for participants seeking Continuing Education Units (CEUs) in accordance with the rules & regulations of the International Association for Continuing Education & Training (IACET). IACET is an international authority that evaluates programs according to strict, research-based criteria and guidelines. The CEU is an internationally accepted uniform unit of measurement in qualified courses of continuing education.

Haward Technology is accredited by











P.O. Box 26070, Abu Dhabi, United Arab Emirates | Tel.: +971 2 3091 714 | Fax: +971 2 3091 716 | E-mail: info@haward.org | Website: www.haward.org

* Haward Technology * CEUs * Haward Technology * CEUs * Haward Technology * CEUs * Haward Technology *

Certificate Accreditations

Certificates are accredited by the following international accreditation organizations: -


- 

The International Accreditors for Continuing Education and Training (IACET - USA)

Haward Technology is an Authorized Training Provider by the International Accreditors for Continuing Education and Training (IACET), 2201 Cooperative Way, Suite 600, Herndon, VA 20171, USA. In obtaining this authority, Haward Technology has demonstrated that it complies with the **ANSI/IACET 2018-1 Standard** which is widely recognized as the standard of good practice internationally. As a result of our Authorized Provider membership status, Haward Technology is authorized to offer IACET CEUs for its programs that qualify under the **ANSI/IACET 2018-1 Standard**.

Haward Technology’s courses meet the professional certification and continuing education requirements for participants seeking **Continuing Education Units (CEUs)** in accordance with the rules & regulations of the International Accreditors for Continuing Education & Training (IACET). IACET is an international authority that evaluates programs according to strict, research-based criteria and guidelines. The CEU is an internationally accepted uniform unit of measurement in qualified courses of continuing education.

Haward Technology Middle East will award **3.0 CEUs** (Continuing Education Units) or **30 PDHs** (Professional Development Hours) for participants who completed the total tuition hours of this program. One CEU is equivalent to ten Professional Development Hours (PDHs) or ten contact hours of the participation in and completion of Haward Technology programs. A permanent record of a participant’s involvement and awarding of CEU will be maintained by Haward Technology. Haward Technology will provide a copy of the participant’s CEU and PDH Transcript of Records upon request.

- 

British Accreditation Council (BAC)

Haward Technology is accredited by the **British Accreditation Council** for **Independent Further and Higher Education** as an **International Centre**. BAC is the British accrediting body responsible for setting standards within independent further and higher education sector in the UK and overseas. As a BAC-accredited international centre, Haward Technology meets all of the international higher education criteria and standards set by BAC.

Course Instructor(s)

This course will be conducted by the following instructor(s). However, we have the right to change the course instructor(s) prior to the course date and inform participants accordingly:



Mr. Mohammad Hamami, is a **Senior Process Engineer** with an extensive practical experience within the **Oil, Gas, Refinery, Petrochemical** and **Power** industries. His experience covers **Clean Fuel** Technology & Standards, **Clean Fuel** Specification, Emission Regulation, **Crude Oil** Production, **Desulphurization**, **Synthesis Gas Production**, **Naphtha** Isomerization, **Diesel Fuel Additives**, **Storage Tanks** Filtration, **Fuel Quality** Inspection, **Process Plant** Troubleshooting & Engineering Problem Solving, **Process Equipment** Operation, **Process Plant** Operation, **Process Plant** Start-up & Commissioning, **Process Plant** Optimization, **Oil & Gas Field** Operation, **Oil Movement**, Storage & Troubleshooting, **Petroleum Refinery** Process, **Process Reactor** Operation & Troubleshooting, **LPG Oil & Gas** Operation & Troubleshooting, **Crude Oil & LNG** Storage, **LNG & LPG** Plants Gas Processing, **Refinery Process** Operations Technology, **Liquid Bulk Cargo Handling**, **Gas Conditioning & Processing** Technology, **Distillation Column** Design & Operation and **Gasoline & Diesel Fuel** Technology. Further he is also well-versed in **Refinery** Operational Economics & Profitability, Aromatics Manufacturing Process, **Hydrogen Production** Operation, **Steam Reforming** Technology, **Gas Treating**, **Hydro-treating & Hydro-Cracking**, **Catalyst** Material Handling, Gas Sweetening & Sulfur Recovery, Hydro Carbon Dew Point (HCDP) Control, **Heat Exchangers** & Fired Heaters, **Amine** Gas Sweetening, **Plastic Additives** Selection & Application, **Crude & Vacuum** Process Technology, **Flare & Pressure Relief Systems**, Stock Management & **Tank Dipping** Calculation, **NGL Recovery & Fractionation**, **Refrigerant & NGL** Extraction and **Catalytic Cracking & Reforming**.

During his long professional career, Mr. Mohammad worked as a **Refinery Manager**, **Operations Manager**, **Section Head/Superintendent** and **Process Engineer** for **Process Units**, **Utilities & Oil Movement** in various companies. He has been responsible for a number of **technological-driven world-scale hydrocarbon processing projects** from **beginning to successful start-up**.

Mr. Mohammad has a **Bachelor's** degree in **Chemical Engineering**. He is an **active member** of the **American Institute of Chemical Engineers (AIChE)** and has presented **technical papers** at its **several national meetings**. He has largely participated in the **start-up of seven world-scale process plants** which made him an **International Expert** in **Process Plant Start-Up** and **Oil Movement** and a **Certified Instructor/Trainer**.



Course Program

The following program is planned for this course. However, the course instructor(s) may modify this program before or during the course for technical reasons with no prior notice to participants. Nevertheless, the course objectives will always be met:

Day 1

0730 – 0800	Registration & Coffee
0800 – 0815	Welcome & Introduction
0815 – 0830	PRE-TEST
0830 – 0915	Introduction to Process Plant Process Overview • Plant Types • Plant Layout • Process Equipment • Piping System • Control & Instrumentation • Safety
0915 – 1000	Centrifugal Pumps Configurations & Styles • Application Ranges and Constraints • Construction Features & Options • Pump Auxiliaries • Wear Components • Canned Motor & Magnetic Drive Pumps • High Speed/Low Flow Pumps • Servicing & Condition Monitoring • Operation • Control • Troubleshooting
1000 – 1015	Break
1015 – 1100	Positive Displacement & Vacuum Pumps Reciprocating Steam & Power Pumps • Diaphragm Pumps • Plunger Pumps • Gear Screw & Progressive Cavity Pumps • Peristaltic Pumps • Conventional & Special Vacuum Pumps • Liquid Jet & Liquid Ring Pumps • Combination & Staged Vacuum Pumps • Operation • Control • Troubleshooting
1100 – 1215	Centrifugal Compressors Types, Styles & Configurations of Centrifugal & Axial Compressors • Construction Features • Mode of Operation • Compressor Auxiliaries and Support Systems • Condition Monitoring • Application Criteria • Performance Capabilities & Limitations • Operation • Control • Troubleshooting
1215 – 1230	Break
1230 – 1330	Displacement Compressors Classification • Reciprocating Compressors vs. Rotary Screw Compressors • Application Ranges & Limitations • Compression Processes • Construction Features & Components • Capacity Control • Operation • Troubleshooting
1330 – 1420	Steam Turbines & Expanders Impulse Turbines • Reaction Turbines • Application Ranges • Turbine Configurations • Applications Constraints • Maintenance • Turbo-expander Construction Features • Applications • Operation • Control • Troubleshooting
1420 – 1430	Recap Using this Course Overview, the Instructor(s) will Brief Participants about the Topics that were Discussed Today and Advise Them of the Topics to be Discussed Tomorrow
1430	Lunch & End of Day One

Day 2

0730 – 0900	Gas Turbines & Engines Simple Cycle • Heat Recovery Cycles • Type Selection • Maintenance • Two- & Four-Cycle Gas Engines • Gas Engine Compressor Auxiliary Systems • Operation • Control • Troubleshooting
0900 – 1000	Fans and Blowers Types & Configurations • Performance & System Effects • Performance Correction • Capacity Control Options • Operation • Troubleshooting
1000 – 1015	Break



1015 – 1100	Electric Motors Design • Controls • Wiring Systems • Standard Motors • Special Designs • Major Components • The Motor as Part of a System • Adjustable Frequency Motors • Operation • Control • Troubleshooting
1100 – 1215	Gears & Transmission Equipment Types of Gears • Applications Constraints • Maintenance • Troubleshooting
1215 – 1230	Break
1230 – 1330	Heat Exchangers Heat Exchangers • Shell-&-Tube Exchangers • Double-Pipe Exchangers • Plate-&-Frame Exchangers • Aerial Coolers • Fired Heater • Heat Recovery Units • Heat Exchanger Example Problem • Operation • Control • Troubleshooting
1330 – 1420	Distillation Column Flash Stages • Process Design Basic • Reflux Ratio • Minimum Reflux Ratio • Minimum Number of Plates • Optimum Reflux
1420 - 1430	Recap Using this Course Overview, the Instructor(s) will Brief Participants about the Topics that were Discussed Today & Advise Them of the Topics to be Discussed Tomorrow
1430	Lunch & End of Day Two

Day 3

0730 – 0900	How Trays Work Down Common Backup & Flooding • Dumping & Weeping • Optimizing Tower Pressure
0900 – 1000	Reboilers Reboilers Function • The Reboiler • Heat-Balance Calculations • Thermosyphon, Gravity Feed, & Forced • Thermosyphon Reboilers • Forced Circulation Reboilers • Kettle Reboilers • Don't Forget Fouling
1000 – 1015	Break
1015 – 1100	Condensers Flooded Condenser Control • Subcooling, Vapor Binding, & Condensation • Condensation and Condenser Design • Pressure Control
1100 – 1215	Introduction to Piping Layout P&ID's • Piping Arrangements • Isometrics • B.O.M.'s • Piping Specifications
1215 – 1230	Break
1230 – 1330	Piping Components & Valves Fittings – Butt Weld • Socket Weld • Threaded, Valve Types and Application
1330 – 1420	Process & Utility Piping Design & Layout of Piping Containing Liquid • Vapour • Steam • Condensate • Slurries • Etc.
1420 - 1430	Recap Using this Course Overview, the Instructor(s) will Brief Participants about the Topics that were Discussed Today & Advise Them of the Topics to be Discussed Tomorrow
1430	Lunch & End of Day Three



Day 4

0730 – 0900	Valves <i>Valve Theory • Valve Types • Applications • Functions • Operation • Maintenance • Troubleshooting</i>
0900 – 1000	Process Control <i>Control History • Basic Measurement Concepts • Performance Terms • Basic Control Theory</i>
1000 – 1015	Break
1015 – 1100	Pressure Measurement <i>Basic Principles • Pressure Transducers–Mechanical • Pressure Transducers–Electrical • Installation Considerations</i>
1100 – 1215	Level Measurement <i>Main Types • Simple Sight Glass • Gauging Rods • Buoyancy Tape Systems • Hydrostatic Pressure • Ultrasonic Measurement • Radar Measurement • Vibration Switches • Radiation Measurement • Electrical Measurement • Installation Considerations</i>
1215 – 1230	Break
1230 – 1330	Temperature Measurement <i>Principles • Thermocouples • Resistance Temperature Detectors (RTD’s) • Thermistors • Non-Contact Types</i>
1330 – 1420	Flow Measurement <i>Basic Flow Theory • Differential Pressure Flow Measurement • Oscillatory Flow Measurement • Magnetic Flowmeters • Ultrasonic Flow Measurement • Mass Flow Meters • Installation Considerations • Impact on Overall Loop</i>
1420 - 1430	Recap <i>Using this Course Overview, the Instructor(s) will Brief Participants about the Topics that were Discussed Today and Advise Them of the Topics to be Discussed Tomorrow</i>
1430	Lunch & End of Day Four

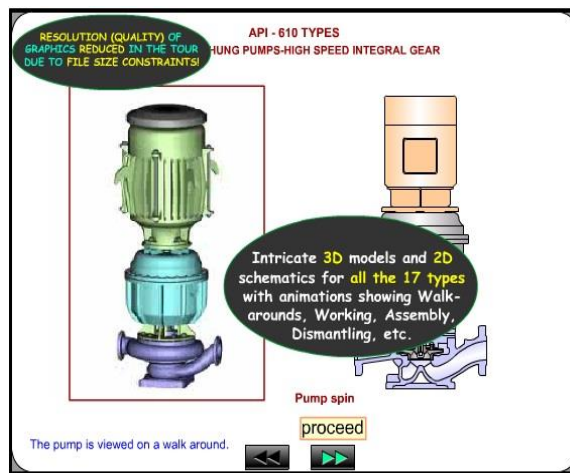
Day 5

0730 – 0900	Control Valves–Body Types <i>Principles of Control Valves • What Happens Inside a Control Valve? • Choked Flow • Cavitation • Flashing • Valve Coefficient (Cv) • Control Valve Types • Valve Characteristics • Trim Characteristics • Control Valve Selection • Leakage Rates</i>
0900 – 1000	Control Valves–Actuators & Accessories <i>Main Types of Actuators • Linear Actuators • Rotary Actuators • Actuator Forces • Positioners • Fail Safe Actuators</i>
1000 – 1015	Break
1015 – 1100	P & ID, Wiring Schematics & Diagrams <i>Block Flow Diagrams • Process Flow Diagrams • Mass Balance • Piping & Installation Diagrams • P & ID Symbols • HAZOP • P & ID Standards • Valves • Standardization of Symbols • Schedules • Layout Drawings</i>
1100 – 1215	What is Troubleshooting? <i>Characteristics of a Troubleshooting Problem • Characteristics of the Process Used to Solve Troubleshooting Problems</i>
1215 – 1230	Break
1230 – 1245	The Mental Problem-Solving Process <i>Problem Solving • Troubleshooting • Overall Summary of Major Skills & a Worksheet • Example Use of the Trouble-shooter’s Worksheet</i>

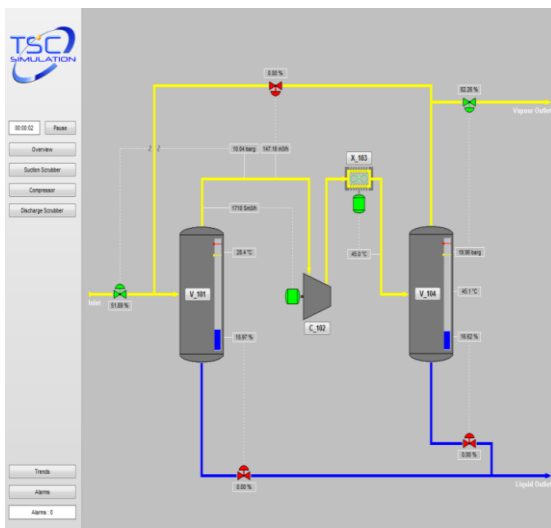
1245 – 1300	Rules of Thumb for Troubleshooting Overall • Transportation Problems • Energy Exchange • Homogenous Separation • Heterogenous Separations • Reactor Problems • Mixing Problems • Size-Decrease Problems • Size Enlargement • Vessels, Bins, Hoppers & Storage Tanks • “Systems” Thinking • Health, Fire & Stability
1300 - 1315	Course Conclusion Using this Course Overview, the Instructor(s) will Brief Participants about the Course Topics that were Covered During the Course
1315 – 1415	COMPETENCY EXAM
1415 – 1430	Presentation of Course Certificates
1430	Lunch & End of Course

Simulator (Hands-on Practical Sessions)

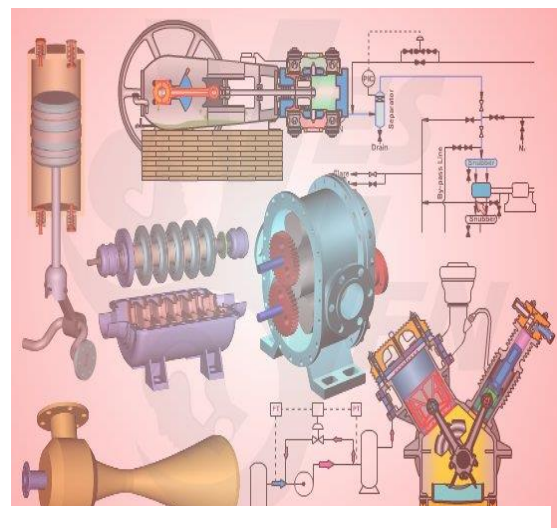
Practical session will be organized during the course for delegates to practice the theory learnt. Delegates will be provided with an opportunity to carryout various exercises using the state-of-the-art simulators.



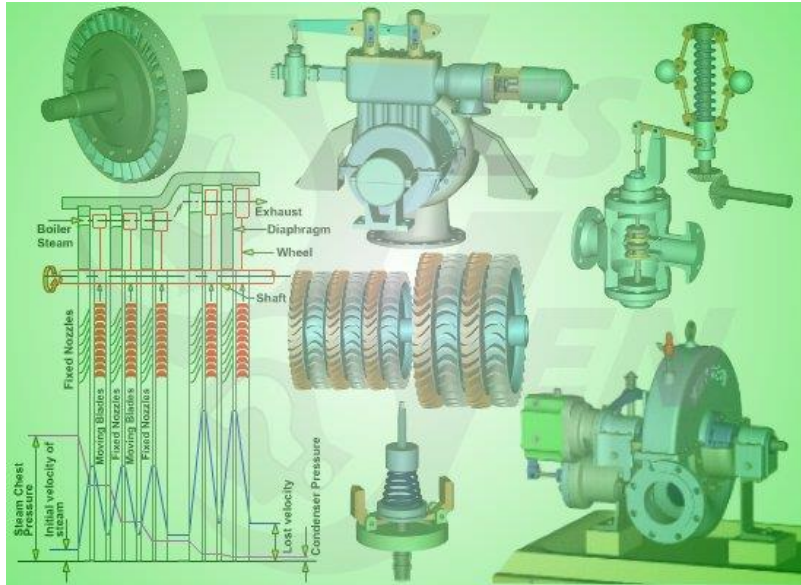
Centrifugal Pumps and Troubleshooting Guide 3.0



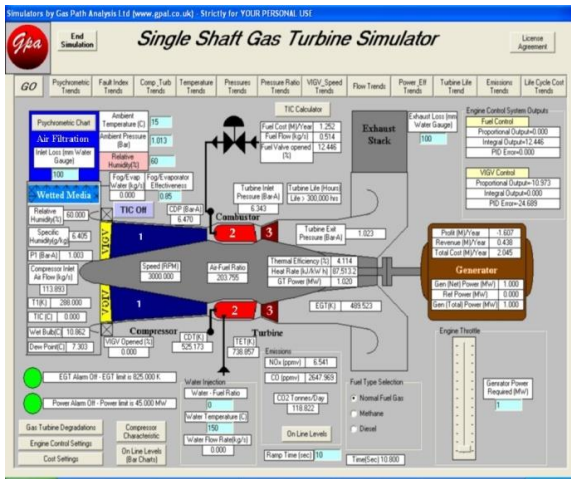
SIM 3300 Centrifugal Compressor Simulator



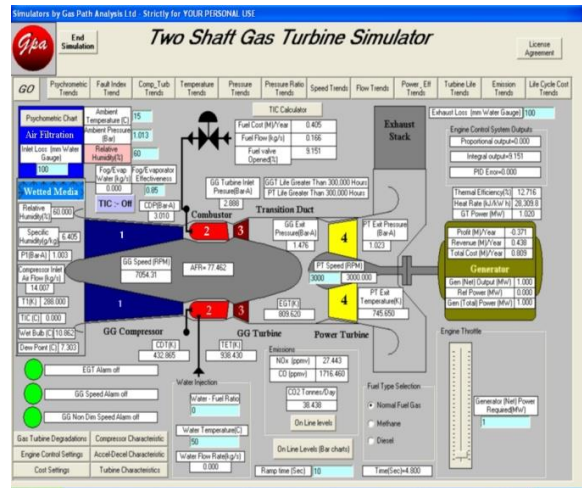
CBT on Compressors



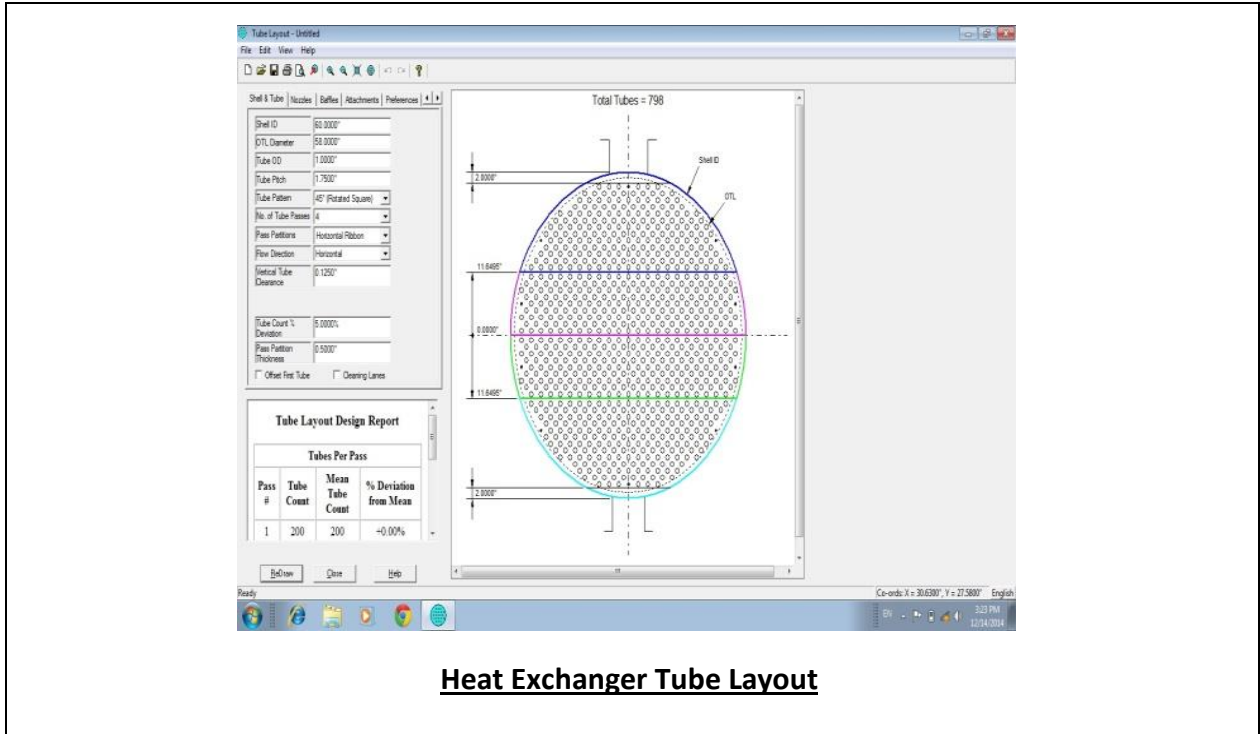
Steam Turbines & Governing System CBT



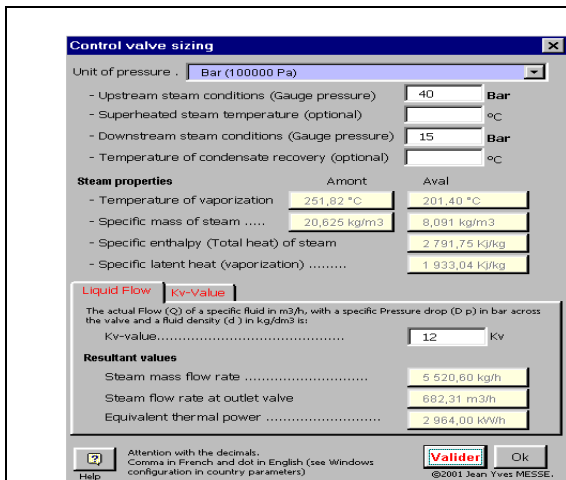
Single Shaft Gas Turbine Simulator



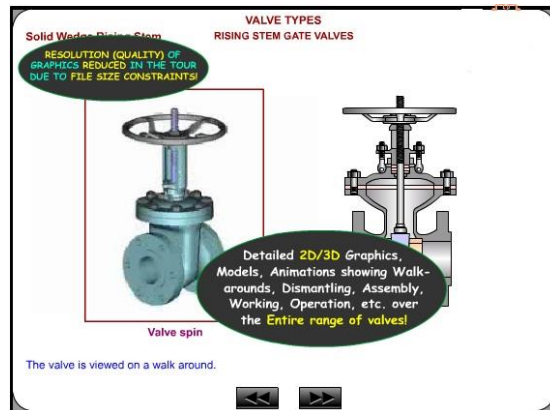
Two Shaft Gas Turbine Simulator



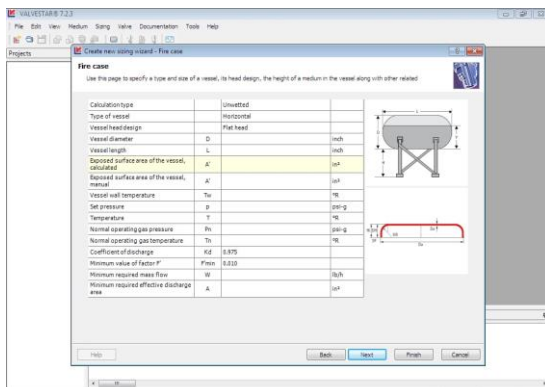
Heat Exchanger Tube Layout



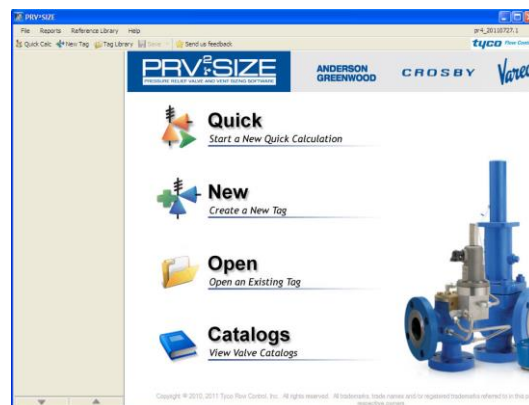
Valve Sizing Simulator



Valve Simulator 3.0



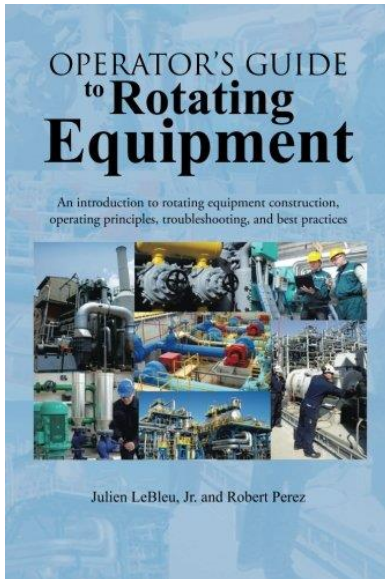
Valvestar 7.2 Simulator



PRV²SIZE Simulator

Book(s)

As part of the course kit, the following e-book will be given to all participants:

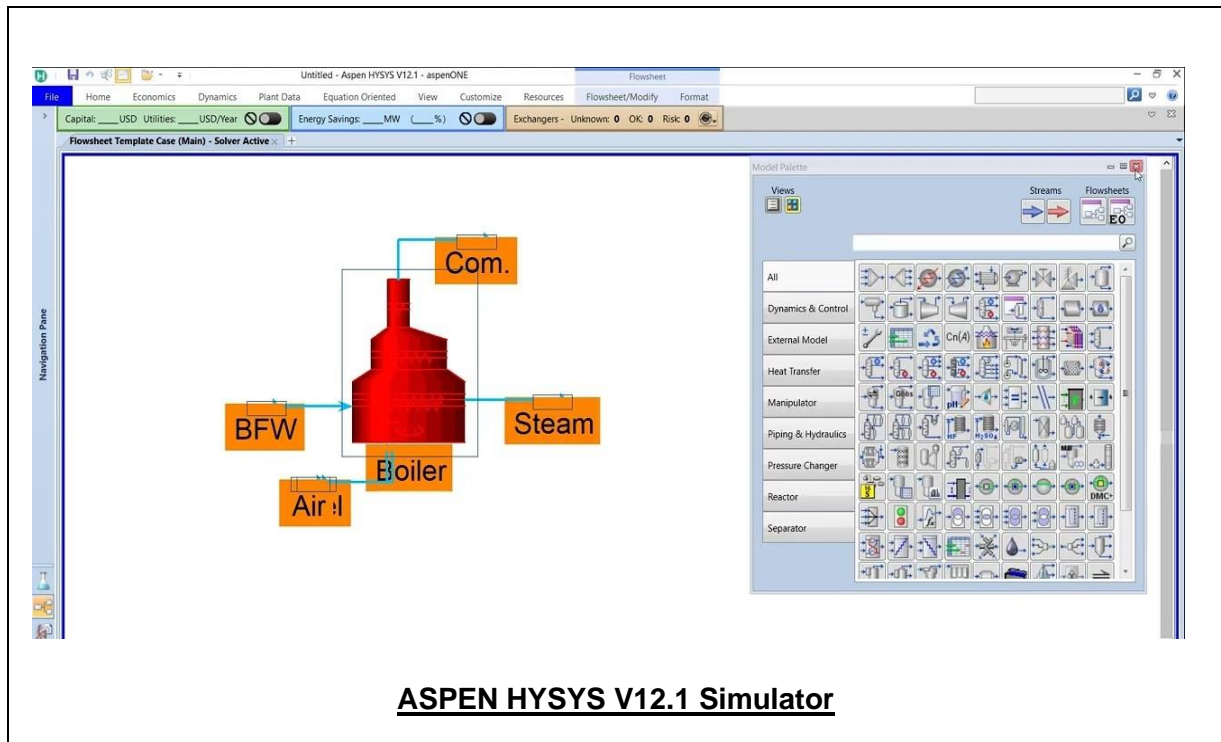


Title : Operator's Guide to Rotating Equipment: An Introduction to Rotating Equipment Construction, Operating Principles, Troubleshooting and Best Practices

ISBN : 978-1-49690-868-1

Authors : Julien LeBleu
Robert Perez

Publisher : AuthorHouse



Course Coordinator

Mari Nakintu, Tel: +971 2 30 91 714, Email: mari1@haward.org